



# Sanitary Fittings & Connections

## 3-A Sanitary Fittings

- Elbow - 45°, 90°, 180°
- Tee - Equal, Reducing, Cross
- Reducer - Concentric, Eccentric

## 3-A Sanitary Connections

- DIN 11853-1 Hygienic Screw Connections
- DIN 11864-1 Aseptic Screw Connections
- DIN 11853-2 Hygienic Flange Connections
- DIN 11864-2 Aseptic Flange Connections
- DIN 11853-3 Hygienic Clamp Connections
- DIN 11864-3 Aseptic Clamp Connections
- Clamp Union

ISSUE DATE: August 05, 2021

CERTIFICATE AUTHORIZATION NUMBER: 3830



THIS IS TO CERTIFY THAT

MST STAINLESS STEEL SDN BHD (MINOX)

NO.3, JALAN INDUSTRI PRP 11, TAMAN INDUSTRI PUSAT BANDAR PUCHONG, 47100 PUCHONG, SELANGOR DARULHSAN, Malaysia

is hereby authorized to continue to apply the 3-A Symbol to the models of equipment, conforming to 3-A Sanitary Standards for:

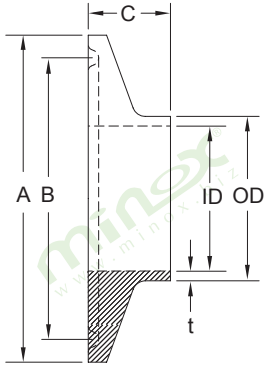
Number 83-04

83-04 (Sanitary Fittings)

see table below

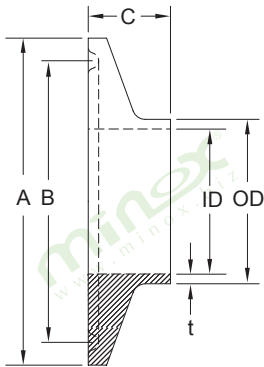
CIP Model Numbers: FITTINGS IN 304, 304L, 316, 316L, SS. Brand Name: MINOX  
 WELD TYPE: END CAP A200/A200E (0.5"-8"), 90 DEG ELBOW A200Z (0.5"-8"), 90 DEG LONG ELBOW A200A/A200S (0.5"-8"), 45 DEG ELBOW A2001 (0.5"-8"), 45 DEG LONG ELBOW A200AA/A200AS (1"-4"), 180 DEG ELBOW A200S (1"-4"), SHORT LONG EQUAL TEE A2101A/A2101A1 (0.5"-12"), INSTRUMENT TEE A2103 (1"-4"), INSTRUMENT REDUCING TEE A3001 (1.5"x1"-4"x3"), CONC TEE A2106A/A2106A1 (0.5"-6"), REDUCING TEE A2801A/A2802A/A2802 (1.5"x1"-6"x4"), CONC REDUCER A300/A300A/A300A1 (0.75"x0.5"-6"x4"), ECC REDUCER A3101/A3101 (0.75"x0.5"-4"x3"), 180 DEG LONG ELBOW A200E (0.5"-8"), CONECC REDUCER W/0 TANGENT A3001/A3101 (0.75"x0.5"-6"x4")  
 CLAMP TYPE: 90 DEG ELBOW A209A/A209A (0.5"-12"), EQUAL TEE A2102/A2110A/A2110 (0.5"-12"), INSTRUMENT TEE A210A/A210A (0.5"-4"), REDUCING TEE A280A/A280A/A280A (0.75"x0.5"-8"x4"), INSTRUMENT REDUCING TEE A340A/A340Z (0.75"x0.5"-4"x3), EQUAL TEE W/0W A2111 (1"-4"), EQUAL TEE W/0C A2112 (1"-4"), EQUAL TEE W/0C A2113 (1"-4"), EQUAL TEE W/0A A2114A/A2114 (1"-4"), 90 DEG ELBOW W/0 A2012 (0.5"-5"), REDUC LONG ELBOW W/0 A2011A/A2011 (0.5"-5"), 45 DEG ELBOW W/0 A2014A/A2014 (1"-4"), 180 DEG ELBOW W/0 A2014 (1"-4"), 180 DEG LONG ELBOW A2007 (0.5"-4"), SHORT LONG CROSS TEE A2107A/A2107A1 (0.5"-8"), INSTRUMENT REDUCING TEE W/0W A300A/A300C (1"x0.75"-4"x3"), INSTRUMENT TEE W/0W A2115A/A2115 (0.5"-4"), CONECC REDUCER A200Z (0.5"-8"), A3102 (0.5"-4"), A3002 (0.75"x0.5"-4")  
 FERRULE: FERRULE A100A/A100A1 (0.5"-12"), FERRULE A1017 (0.5"-12"), FERRULE - THICK A1018 (0.5"-8")  
 DIN11853-DIN11854-1: DIN MALE PART A1601/A1610 (0.5"-4"), LINER A1602/A1614 (0.5"-4"), BLANK MALE A1603 (0.5"-4"), BLANK LINER A1604 (0.5"-4")  
 DIN11853-DIN11854-2: FLANGE NUT A1605A1615 (0.5"-4"), FLANGE LINER A1606A1616 (0.5"-4"), FLANGE BLANK NUT A1607 (0.5"-4"), FLANGE BLANK LINER A1608 (0.5"-4")  
 DIN11853-DIN11854-3: CLAMP NUT A1609A1617 (0.5"-4"), CLAMP LINER A1610A1618 (0.5"-4"), CLAMP BLANK NUT A1611 (0.5"-4"), CLAMP BLANK LINER A1612 (0.5"-4")





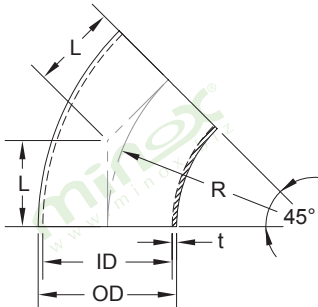
**[A10] Ferrule  
Dimension (mm)**

Size (Inch)	OD / ID x t	A	B	C1	C2	C3
0.5"	12.7 / 9.40 x 1.65	25.2	20.3	12.7	21.5	28.6
0.75"	19.05 / 15.75 x 1.65	25.2	20.3	12.7	21.5	28.6
1.0"	25.4 / 22.10 x 1.65	50.5	43.5	12.7	21.5	28.6
1.5"	38.1 / 34.80 x 1.65	50.5	43.5	12.7	21.5	28.6
2.0"	50.8 / 47.50 x 1.65	64.0	56.5	12.7	21.5	28.6
2.5"	63.5 / 60.20 x 1.65	77.5	70.6	12.7	21.5	28.6
3.0"	76.2 / 72.90 x 1.65	91.0	83.5	12.7	21.5	28.6
4.0"	101.6 / 97.38 x 2.11	119.0	110.0	15.9	21.5	28.6
6.0"	152.4 / 146.86 x 2.77	167.0	156.5	22.2	38.1	152.4



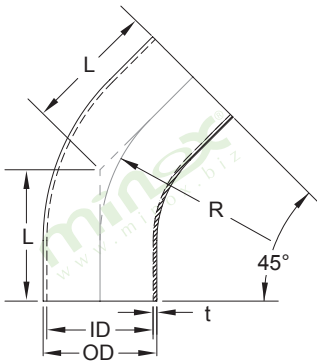
**[A1018] Ferrule - Thick  
Dimension (mm)**

Size (Inch)	OD / ID x t	A	B	C
0.5"	12.70 / 8.10 x 2.30	25.2	20.3	41.3
0.75"	19.05 / 14.60 x 2.22	25.2	20.3	41.3
1.0"	29.46 / 22.10 x 3.68	50.5	43.5	41.3
1.5"	42.60 / 34.80 x 3.89	50.5	43.5	41.3
2.0"	55.70 / 47.50 x 4.09	64.0	56.5	44.5
2.5"	68.80 / 60.20 x 4.29	77.5	70.6	44.5
3.0"	81.90 / 72.90 x 4.50	91.0	83.5	46.0
4.0"	108.10 / 97.38 x 5.36	119.0	110.0	54.0
6.0"	157.3 / 146.25 x 5.50	167.0	156.5	63.5



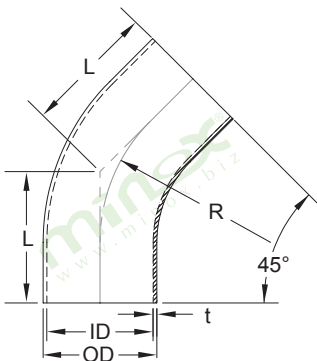
**[A2001] 45 Deg Elbow with Weld End  
Dimension (mm)**

Size (Inch)	OD / ID x t	L	R
0.5"	12.7 / 9.4 x 1.65	7.1	19.05
0.75"	19.05 / 15.75 x 1.65	11.9	28.60
1.0"	25.4 / 22.1 x 1.65	15.9	38.10
1.5"	38.1 / 34.8 x 1.65	23.8	57.20
2.0"	50.8 / 47.5 x 1.65	31.8	76.20
2.5"	63.5 / 60.2 x 1.65	39.7	95.30
3.0"	76.2 / 72.9 x 1.65	47.6	114.30
4.0"	101.6 / 97.38 x 2.11	63.5	152.40
6.0"	152.4 / 146.86 x 2.77	95.3	228.60



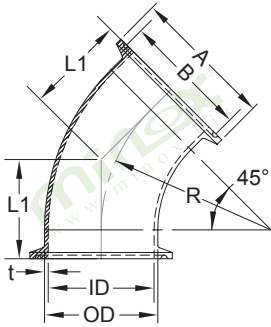
**[A2009] 45 Deg Long Elbow with Weld End  
Dimension (mm)**

Size (Inch)	OD / ID x t	L	R
0.5"	12.7 / 9.4 x 1.65	57.2	28.6
0.75"	19.05 / 15.75 x 1.65	57.2	28.6
1.0"	25.4 / 22.1 x 1.65	30.2	38.1
1.5"	38.1 / 34.8 x 1.65	41.3	57.2
2.0"	50.8 / 47.5 x 1.65	58.7	76.2
2.5"	63.5 / 60.2 x 1.65	76.2	95.3
3.0"	76.2 / 72.9 x 1.65	93.7	114.3
4.0"	101.6 / 97.38 x 2.11	122.2	152.4
6.0"	152.4 / 146.86 x 2.77	158.8	228.6



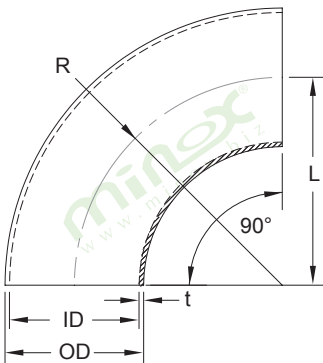
**[A20909] 45 Deg Elbow with Automatic Tube  
Weld End  
Dimension (mm)**

Size (Inch)	OD / ID x t	L	R
0.5"	12.7 / 9.4 x 1.65	57.2	28.6
0.75"	19.05 / 15.75 x 1.65	57.2	28.6
1.0"	25.4 / 22.1 x 1.65	57.2	38.1
1.5"	38.1 / 34.8 x 1.65	63.5	57.2
2.0"	50.8 / 47.5 x 1.65	76.2	76.2
2.5"	63.5 / 60.2 x 1.65	85.7	95.3
3.0"	76.2 / 72.9 x 1.65	92.1	114.3
4.0"	101.6 / 97.38 x 2.11	114.3	152.4
6.0"	152.4 / 146.86 x 2.77	158.8	228.6



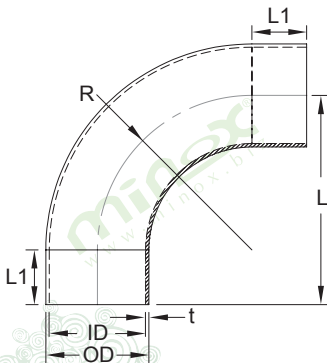
**[A2010] 45 Deg Elbow with Clamp End  
Dimension (mm)**

Size (Inch)	OD / ID x t	A	B	L1	R
0.5"	12.7 / 9.40 x 1.65	25.2	20.3	19.8	19.05
0.75"	19.05 / 15.75 x 1.65	25.2	20.3	24.6	28.60
1.0"	25.4 / 22.10 x 1.65	50.5	43.5	28.6	38.10
1.5"	38.1 / 34.80 x 1.65	50.5	43.5	36.5	57.20
2.0"	50.8 / 47.50 x 1.65	64.0	56.5	44.5	76.20
2.5"	63.5 / 60.20 x 1.65	77.5	70.6	52.4	95.30
3.0"	76.2 / 72.90 x 1.65	91.0	83.5	60.3	114.30
4.0"	101.6 / 97.38 x 2.11	119.0	110.0	79.4	152.40
6.0"	152.4 / 146.86 x 2.77	167.0	156.5	133.4	228.60



**[A2002] 90 Deg Elbow with Weld End  
Dimension (mm)**

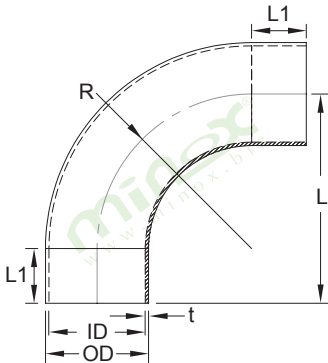
Size (Inch)	OD / ID x t	L	R
0.5"	12.7 / 9.4 x 1.65	19.05	19.05
0.75"	19.05 / 15.75 x 1.65	28.60	28.60
1.0"	25.4 / 22.1 x 1.65	38.10	38.10
1.5"	38.1 / 34.8 x 1.65	57.20	57.20
2.0"	50.8 / 47.5 x 1.65	76.20	76.20
2.5"	63.5 / 60.2 x 1.65	95.30	95.30
3.0"	76.2 / 72.9 x 1.65	114.30	114.30
4.0"	101.6 / 97.38 x 2.11	152.40	152.40
6.0"	152.4 / 146.86 x 2.77	228.60	228.60



**[A2003] 90 Deg Long Elbow with Weld End  
Dimension (mm)**

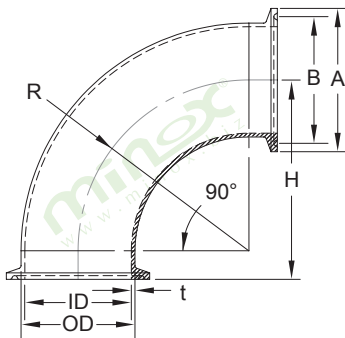
Size (Inch)	OD / ID x t	L	L1	R
0.5"	12.7 / 9.4 x 1.65	76.2	57.1	28.6
0.75"	19.05 / 15.75 x 1.65	76.2	47.6	28.6
1.0"	25.4 / 22.1 x 1.65	52.4	14.3	38.1
1.5"	38.1 / 34.8 x 1.65	74.6	17.4	57.2
2.0"	50.8 / 47.5 x 1.65	103.2	27.0	76.2
2.5"	63.5 / 60.2 x 1.65	131.8	36.5	95.3
3.0"	76.2 / 72.9 x 1.65	160.3	46.0	114.3
4.0"	101.6 / 97.38 x 2.11	211.1	58.7	152.4
6.0"	152.4 / 146.86 x 2.77	316.5	87.9	228.6





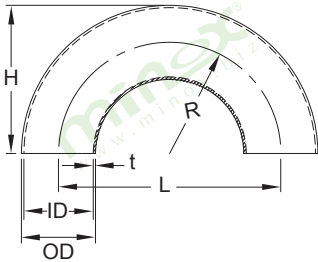
**[A20903] 90 Deg Elbow with Automatic Tube Weld End**  
Dimension (mm)

Size (Inch)	OD / ID x t	L	L1	R
0.5"	12.7 / 9.4 x 1.65	76.2	38.1	28.6
0.75"	19.05 / 15.75 x 1.65	76.2	38.1	28.6
1.0"	25.4 / 22.1 x 1.65	76.2	38.1	38.1
1.5"	38.1 / 34.8 x 1.65	95.3	38.1	57.2
2.0"	50.8 / 47.5 x 1.65	120.7	44.5	76.2
2.5"	63.5 / 60.2 x 1.65	139.7	44.5	95.3
3.0"	76.2 / 72.9 x 1.65	158.8	44.5	114.3
4.0"	101.6 / 97.38 x 2.11	203.2	50.8	152.4
6.0"	152.4 / 146.86 x 2.77	292.1	63.5	228.6



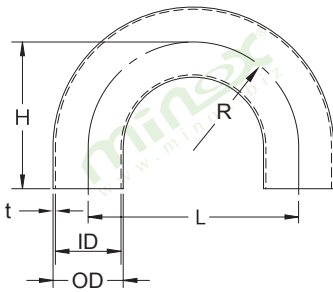
**[A2004] 90 Deg Elbow with Clamp End**  
Dimension (mm)

Size (Inch)	OD / ID x t	A	B	H	R
0.5"	12.7 / 9.40 x 1.65	25.2	20.3	31.8	19.05
0.75"	19.05 / 15.75 x 1.65	25.2	20.3	41.3	28.60
1.0"	25.4 / 22.10 x 1.65	50.5	43.5	50.8	38.10
1.5"	38.1 / 34.80 x 1.65	50.5	43.5	69.9	57.20
2.0"	50.8 / 47.50 x 1.65	64.0	56.5	88.9	76.20
2.5"	63.5 / 60.20 x 1.65	77.5	70.6	108.0	95.30
3.0"	76.2 / 72.90 x 1.65	91.0	83.5	127.0	114.30
4.0"	101.6 / 97.38 x 2.11	119.0	110.0	168.3	152.40
6.0"	152.4 / 146.86 x 2.77	167.0	156.5	266.7	228.60



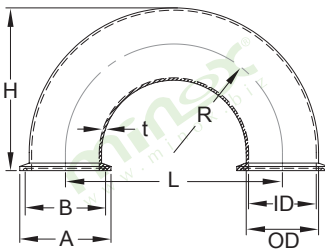
**[A2005] 180 Deg Elbow with Weld End  
Dimension (mm)**

Size (Inch)	OD / ID x t	L	H	R
1.0"	25.4 / 22.1 x 1.65	76.2	50.8	38.1
1.5"	38.1 / 34.8 x 1.65	114.3	76.2	57.2
2.0"	50.8 / 47.5 x 1.65	152.4	101.6	76.2
2.5"	63.5 / 60.2 x 1.65	190.5	127.0	95.3
3.0"	76.2 / 72.9 x 1.65	228.6	152.4	114.3
4.0"	101.6 / 97.38 x 2.11	304.8	203.2	152.4



**[A2006] 180 Deg Long Elbow with Weld End  
Dimension (mm)**

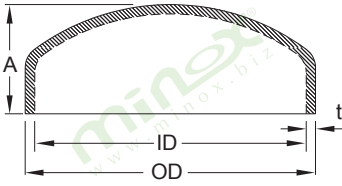
Size (Inch)	OD / ID x t	L	H	R
0.5"	12.7 / 9.4 x 1.65	114.3	76.2	57.2
0.75"	19.05 / 15.75 x 1.65	114.3	76.2	57.2
1.0"	25.4 / 22.1 x 1.65	76.2	76.2	38.1
1.5"	38.1 / 34.8 x 1.65	114.3	114.3	57.2
2.0"	50.8 / 47.5 x 1.65	152.4	127.0	76.2
2.5"	63.5 / 60.2 x 1.65	190.5	146.05	95.3
3.0"	76.2 / 72.9 x 1.65	228.6	165.0	114.3
4.0"	101.6 / 97.38 x 2.11	304.8	215.9	152.4
6.0"	152.4 / 146.86 x 2.77	457.2	292.1	228.6



**[A2014] 180 Deg Elbow with Clamp End  
Dimension (mm)**

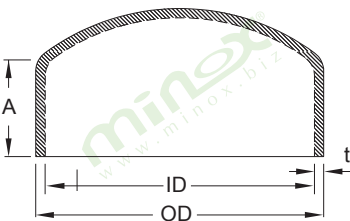
Size (Inch)	OD / ID x t	A	B	L	H	R
1.0"	25.4 / 22.10 x 1.65	50.5	43.5	76.2	63.50	38.1
1.5"	38.1 / 34.80 x 1.65	50.5	43.5	114.3	88.90	57.2
2.0"	50.8 / 47.50 x 1.65	64.0	56.5	152.4	114.30	76.2
2.5"	63.5 / 60.20 x 1.65	77.5	70.6	190.5	139.70	95.3
3.0"	76.2 / 72.90 x 1.65	91.0	83.5	228.6	165.10	114.3
4.0"	101.6 / 97.38 x 2.11	119.0	110.0	304.8	219.08	152.4





**[A2901] Tube End Cap  
Dimension (mm)**

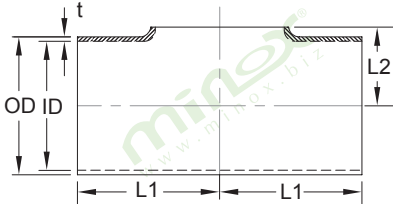
Size (Inch)	OD / ID x t	A
0.5"	12.7 / 9.40 x 1.65	6.4
0.75"	19.05 / 15.75 x 1.65	7.9
1.0"	25.4 / 22.10 x 1.65	9.5
1.5"	38.1 / 34.80 x 1.65	14.3
2.0"	50.8 / 47.50 x 1.65	19.1
2.5"	63.5 / 60.20 x 1.65	25.4
3.0"	76.2 / 72.90 x 1.65	31.8
4.0"	101.6 / 97.38 x 2.11	38.1
6.0"	152.4 / 146.86 x 2.77	57.2



**[A2901] Tube End Cap with Automatic Tube  
Weld End  
Dimension (mm)**

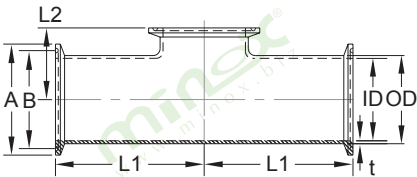
Size (Inch)	OD / ID x t	A
0.5"	12.7 / 9.40 x 1.65	38.1
0.75"	19.05 / 15.75 x 1.65	38.1
1.0"	25.4 / 22.10 x 1.65	38.1
1.5"	38.1 / 34.80 x 1.65	38.1
2.0"	50.8 / 47.50 x 1.65	38.1
2.5"	63.5 / 60.20 x 1.65	38.1
3.0"	76.2 / 72.90 x 1.65	44.5
4.0"	101.6 / 97.38 x 2.11	50.8
6.0"	152.4 / 146.86 x 2.77	63.5





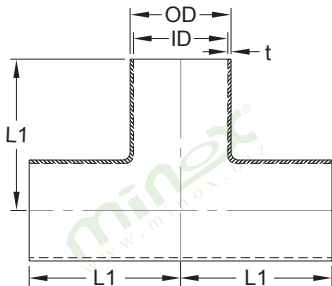
**[A2103] Instrument Tee with Weld End  
Dimension (mm)**

Size (Inch)	OD / ID x t	L1	L2
1.0"	25.4 / 22.1 x 1.65	28.6	16
1.5"	38.1 / 34.8 x 1.65	42.1	22
2.0"	50.8 / 47.5 x 1.65	52.4	29
2.5"	63.5 / 60.2 x 1.65	59.5	35
3.0"	76.2 / 72.9 x 1.65	65.9	41
4.0"	101.6 / 97.38 x 2.11	87.3	54



**[A2104] Instrument Tee with Clamp End  
Dimension (mm)**

Size (Inch)	OD / ID x t	A	B	L1	L2
0.5"	12.7 / 9.40 x 1.65	25.2	20.3	31.8	25.4
0.75"	19.05 / 15.75 x 1.65	25.2	20.3	41.3	28.6
1.0"	25.4 / 22.10 x 1.65	50.5	43.5	41.3	28.6
1.5"	38.1 / 34.80 x 1.65	50.5	43.5	54.8	34.9
2.0"	50.8 / 47.50 x 1.65	64.0	56.5	65.1	41.3
2.5"	63.5 / 60.20 x 1.65	77.5	70.6	72.2	47.6
3.0"	76.2 / 72.90 x 1.65	91.0	83.5	78.6	54.0
4.0"	101.6 / 97.38 x 2.11	119.0	110.0	103.2	69.9

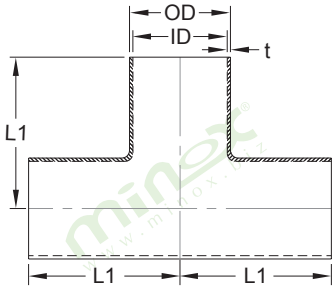


**[A2101] Equal Tee with Weld End  
Dimension (mm)**

Size (Inch)	OD / ID x t	L1
0.5"	12.7 / 9.40 x 1.65	19.1
0.75"	19.05 / 15.75 x 1.65	28.6
1.0"	25.4 / 22.10 x 1.65	28.6
1.5"	38.1 / 34.80 x 1.65	42.1
2.0"	50.8 / 47.50 x 1.65	52.4
2.5"	63.5 / 60.20 x 1.65	59.5
3.0"	76.2 / 72.90 x 1.65	65.9
4.0"	101.6 / 97.38 x 2.11	87.3
6.0"	152.4 / 146.86 x 2.77	127.0

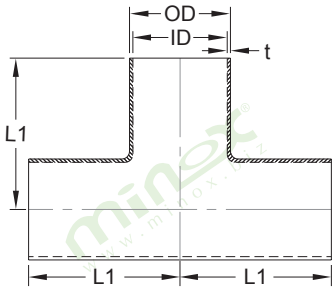






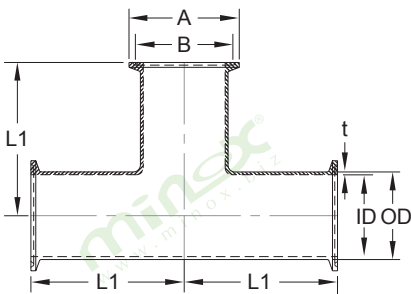
**[A2105] Long Equal Tee with Weld End  
Dimension (mm)**

Size (Inch)	OD / ID x t	L1
0.5"	12.7 / 9.40 x 1.65	47.6
0.75"	19.05 / 15.75 x 1.65	47.6
1.0"	25.4 / 22.10 x 1.65	47.6
1.5"	38.1 / 34.80 x 1.65	57.2
2.0"	50.8 / 47.50 x 1.65	76.2
2.5"	63.5 / 60.20 x 1.65	76.2
3.0"	76.2 / 72.90 x 1.65	82.6
4.0"	101.6 / 97.38 x 2.11	98.4
6.0"	152.4 / 146.86 x 2.77	142.9



**[A21905] Equal Tee with Automatic Tube  
Weld End  
Dimension (mm)**

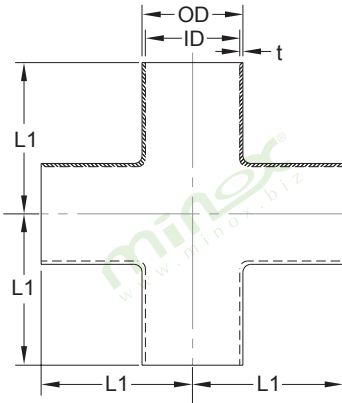
Size (Inch)	OD / ID x t	L1
0.5"	12.7 / 9.40 x 1.65	47.6
0.75"	19.05 / 15.75 x 1.65	50.8
1.0"	25.4 / 22.10 x 1.65	54.0
1.5"	38.1 / 34.80 x 1.65	60.3
2.0"	50.8 / 47.50 x 1.65	73.0
2.5"	63.5 / 60.20 x 1.65	79.4
3.0"	76.2 / 72.90 x 1.65	85.7
4.0"	101.6 / 97.38 x 2.11	104.8
6.0"	152.4 / 146.86 x 2.77	142.9



**[A2102] Equal Tee with Clamp End  
Dimension (mm)**

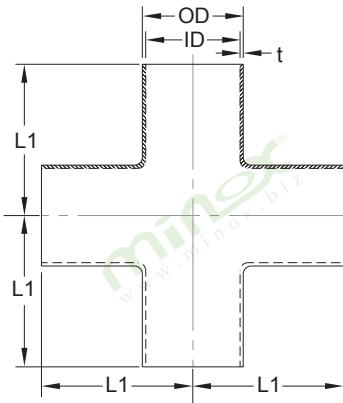
Size (Inch)	OD / ID x t	A	B	L1
0.5"	12.7 / 9.40 x 1.65	25.2	20.3	31.8
0.75"	19.05 / 15.75 x 1.65	25.2	20.3	41.3
1.0"	25.4 / 22.10 x 1.65	50.5	43.5	41.3
1.5"	38.1 / 34.80 x 1.65	50.5	43.5	54.8
2.0"	50.8 / 47.50 x 1.65	64.0	56.5	65.1
2.5"	63.5 / 60.20 x 1.65	77.5	70.6	72.2
3.0"	76.2 / 72.90 x 1.65	91.0	83.5	78.6
4.0"	101.6 / 97.38 x 2.11	119.0	110.0	103.2
6.0"	152.4 / 146.86 x 2.77	167.0	156.5	149.2





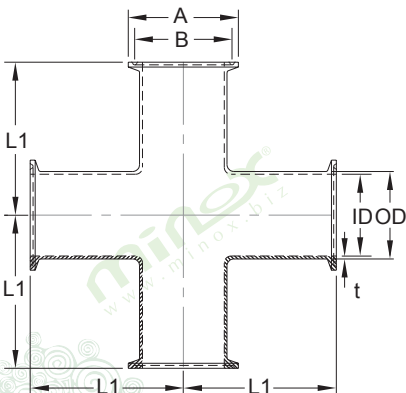
**[A2106] Cross Tee with Weld End  
Dimension (mm)**

Size (Inch)	OD / ID x t	L1
0.5"	12.7 / 9.40 x 1.65	19.1
0.75"	19.05 / 15.75 x 1.65	28.6
1.0"	25.4 / 22.10 x 1.65	28.6
1.5"	38.1 / 34.80 x 1.65	42.1
2.0"	50.8 / 47.50 x 1.65	52.4
2.5"	63.5 / 60.20 x 1.65	59.5
3.0"	76.2 / 72.90 x 1.65	65.9
4.0"	101.6 / 97.38 x 2.11	87.3
6.0"	152.4 / 146.86 x 2.77	127.0



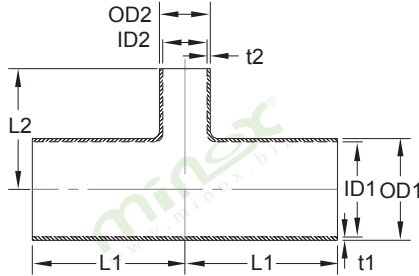
**[A2108] Long Cross Tee with Weld End  
Dimension (mm)**

Size (Inch)	OD / ID x t	L1
0.5"	12.7 / 9.40 x 1.65	47.6
0.75"	19.05 / 15.75 x 1.65	47.6
1.0"	25.4 / 22.10 x 1.65	47.6
1.5"	38.1 / 34.80 x 1.65	57.2
2.0"	50.8 / 47.50 x 1.65	76.2
2.5"	63.5 / 60.20 x 1.65	76.2
3.0"	76.2 / 72.90 x 1.65	82.6
4.0"	101.6 / 97.38 x 2.11	98.4
6.0"	152.4 / 146.86 x 2.77	142.9



**[A2107] Cross Tee with Clamp End  
Dimension (mm)**

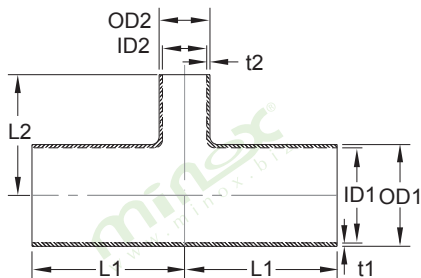
Size (Inch)	OD / ID x t	A	B	L1
0.5"	12.7 / 9.40 x 1.65	25.2	20.3	31.8
0.75"	19.05 / 15.75 x 1.65	25.2	20.3	41.3
1.0"	25.4 / 22.10 x 1.65	50.5	43.5	41.3
1.5"	38.1 / 34.80 x 1.65	50.5	43.5	54.8
2.0"	50.8 / 47.50 x 1.65	64.0	56.5	65.1
2.5"	63.5 / 60.20 x 1.65	77.5	70.6	72.2
3.0"	76.2 / 72.90 x 1.65	91.0	83.5	78.6
4.0"	101.6 / 97.38 x 2.11	119.0	110.0	103.2
6.0"	152.4 / 146.86 x 2.77	167.0	156.5	149.2



**[A2801] Reducing Tee with Weld End  
Dimension (mm)**

Size (Inch)	OD1 / ID1 x t1	OD2 / ID2 x t2	L1	L2
1.5" x 1.0"	38.1 / 34.8 x 1.65	25.4 / 22.1 x 1.65	42.1	34.9
2.0" x 0.5"	50.8 / 47.5 x 1.65	12.7 / 9.4 x 1.65	52.4	41.3
2.0" x 0.75"	50.8 / 47.5 x 1.65	19.05 / 15.75 x 1.65	52.4	41.3
2.0" x 1.0"	50.8 / 47.5 x 1.65	25.4 / 22.1 x 1.65	52.4	41.3
2.0" x 1.5"	50.8 / 47.5 x 1.65	38.1 / 34.8 x 1.65	52.4	48.4
2.5" x 0.5"	63.5 / 60.2 x 1.65	12.7 / 9.4 x 1.65	59.5	47.6
2.5" x 0.75"	63.5 / 60.2 x 1.65	19.05 / 15.75 x 1.65	59.5	47.6
2.5" x 1.0"	63.5 / 60.2 x 1.65	25.4 / 22.1 x 1.65	59.5	47.6
2.5" x 1.5"	63.5 / 60.2 x 1.65	38.1 / 34.8 x 1.65	59.5	54.8
2.5" x 2.0"	63.5 / 60.2 x 1.65	50.8 / 47.5 x 1.65	59.5	58.7
3.0" x 0.75"	76.2 / 72.9 x 1.65	19.05 / 15.75 x 1.65	65.9	54.0
3.0" x 1.0"	76.2 / 72.9 x 1.65	25.4 / 22.1 x 1.65	65.9	54.0
3.0" x 1.5"	76.2 / 72.9 x 1.65	38.1 / 34.8 x 1.65	65.9	61.1
3.0" x 2.0"	76.2 / 72.9 x 1.65	50.8 / 47.5 x 1.65	65.9	65.1
3.0" x 2.5"	76.2 / 72.9 x 1.65	63.5 / 60.2 x 1.65	65.9	65.9
4.0" x 1.0"	101.6 / 97.38 x 2.11	25.4 / 22.1 x 1.65	87.3	66.7
4.0" x 1.5"	101.6 / 97.38 x 2.11	38.1 / 34.8 x 1.65	87.3	73.8
4.0" x 2.0"	101.6 / 97.38 x 2.11	50.8 / 47.5 x 1.65	87.3	78.6
4.0" x 2.5"	101.6 / 97.38 x 2.11	63.5 / 60.2 x 1.65	87.3	78.6
4.0" x 3.0"	101.6 / 97.38 x 2.11	76.2 / 72.9 x 1.65	87.3	78.6
6.0" x 1.5"	152.4 / 146.86 x 2.77	38.1 / 34.8 x 1.65	127.0	120.7
6.0" x 2.0"	152.4 / 146.86 x 2.77	50.8 / 47.5 x 1.65	127.0	120.7
6.0" x 3.0"	152.4 / 146.86 x 2.77	76.2 / 72.9 x 1.65	127.0	120.7
6.0" x 4.0"	152.4 / 146.86 x 2.77	101.6 / 97.38 x 2.11	127.0	123.8

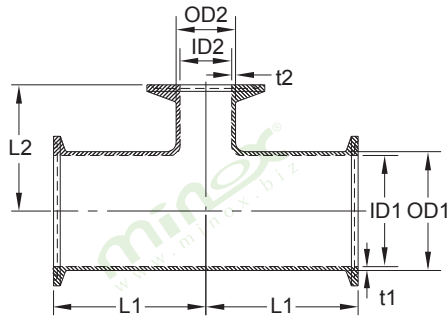




**[A2802] Long Reducing Tee with Weld End  
Dimension (mm)**

Size (Inch)	OD1 / ID1 x t1	OD2 / ID2 x t2	L1	L2
0.75" x 0.5"	19.05 / 15.75 x 1.65	12.7 / 9.4 x 1.65	47.6	38.1
1.0" x 0.5"	25.4 / 22.1 x 1.65	12.7 / 9.4 x 1.65	47.6	38.1
1.0" x 0.75"	25.4 / 22.1 x 1.65	19.05 / 15.75 x 1.65	47.6	50.8
1.5" x 0.5"	38.1 / 34.8 x 1.65	12.7 / 9.4 x 1.65	54.0	54.0
1.5" x 0.75"	38.1 / 34.8 x 1.65	19.05 / 15.75 x 1.65	57.2	57.2
1.5" x 1.0"	38.1 / 34.8 x 1.65	25.4 / 22.1 x 1.65	57.2	54.0
2.0" x 0.5"	50.8 / 47.5 x 1.65	12.7 / 9.4 x 1.65	76.2	66.7
2.0" x 0.75"	50.8 / 47.5 x 1.65	19.05 / 15.75 x 1.65	76.2	66.7
2.0" x 1.0"	50.8 / 47.5 x 1.65	25.4 / 22.1 x 1.65	76.2	60.3
2.0" x 1.5"	50.8 / 47.5 x 1.65	38.1 / 34.8 x 1.65	76.2	63.5
2.5" x 0.5"	63.5 / 60.2 x 1.65	12.7 / 9.4 x 1.65	76.2	66.7
2.5" x 0.75"	63.5 / 60.2 x 1.65	19.05 / 15.75 x 1.65	76.2	66.7
2.5" x 1.0"	63.5 / 60.2 x 1.65	25.4 / 22.1 x 1.65	76.2	66.7
2.5" x 1.5"	63.5 / 60.2 x 1.65	38.1 / 34.8 x 1.65	76.2	69.9
2.5" x 2.0"	63.5 / 60.2 x 1.65	50.8 / 47.5 x 1.65	76.2	82.6
3.0" x 0.5"	76.2 / 72.9 x 1.65	12.7 / 9.4 x 1.65	82.6	76.2
3.0" x 0.75"	76.2 / 72.9 x 1.65	19.05 / 15.75 x 1.65	82.6	76.2
3.0" x 1.0"	76.2 / 72.9 x 1.65	25.4 / 22.1 x 1.65	82.6	76.2
3.0" x 1.5"	76.2 / 72.9 x 1.65	38.1 / 34.8 x 1.65	82.6	76.2
3.0" x 2.0"	76.2 / 72.9 x 1.65	50.8 / 47.5 x 1.65	82.6	88.9
3.0" x 2.5"	76.2 / 72.9 x 1.65	63.5 / 60.2 x 1.65	82.6	82.6
4.0" x 1.0"	101.6 / 97.38 x 2.11	25.4 / 22.1 x 1.65	98.4	88.9
4.0" x 1.5"	101.6 / 97.38 x 2.11	38.1 / 34.8 x 1.65	98.4	88.9
4.0" x 2.0"	101.6 / 97.38 x 2.11	50.8 / 47.5 x 1.65	98.4	101.6
4.0" x 2.5"	101.6 / 97.38 x 2.11	63.5 / 60.2 x 1.65	98.4	95.3
4.0" x 3.0"	101.6 / 97.38 x 2.11	76.2 / 72.9 x 1.65	98.4	95.3

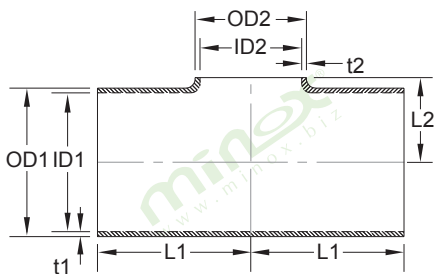




**[A2803] Reducing Tee with Clamp End  
Dimension (mm)**

Size (Inch)	OD1 / ID1 x t1	OD2 / ID2 x t2	L1	L2
1.5" x 1.0"	38.1 / 34.8 x 1.65	25.4 / 22.1 x 1.65	54.8	47.6
2.0" x 0.5"	50.8 / 47.5 x 1.65	12.7 / 9.4 x 1.65	65.1	54.0
2.0" x 0.75"	50.8 / 47.5 x 1.65	19.05 / 15.75 x 1.65	65.1	54.0
2.0" x 1.0"	50.8 / 47.5 x 1.65	25.4 / 22.1 x 1.65	65.1	54.0
2.0" x 1.5"	50.8 / 47.5 x 1.65	38.1 / 34.8 x 1.65	65.1	61.1
2.5" x 0.5"	63.5 / 60.2 x 1.65	12.7 / 9.4 x 1.65	72.2	60.3
2.5" x 0.75"	63.5 / 60.2 x 1.65	19.05 / 15.75 x 1.65	72.2	60.3
2.5" x 1.0"	63.5 / 60.2 x 1.65	25.4 / 22.1 x 1.65	72.2	60.3
2.5" x 1.5"	63.5 / 60.2 x 1.65	38.1 / 34.8 x 1.65	72.2	67.5
2.5" x 2.0"	63.5 / 60.2 x 1.65	50.8 / 47.5 x 1.65	72.2	71.4
3.0" x 0.75"	76.2 / 72.9 x 1.65	19.05 / 15.75 x 1.65	78.6	66.7
3.0" x 1.0"	76.2 / 72.9 x 1.65	25.4 / 22.1 x 1.65	78.6	66.7
3.0" x 1.5"	76.2 / 72.9 x 1.65	38.1 / 34.8 x 1.65	78.6	73.8
3.0" x 2.0"	76.2 / 72.9 x 1.65	50.8 / 47.5 x 1.65	78.6	77.8
3.0" x 2.5"	76.2 / 72.9 x 1.65	63.5 / 60.2 x 1.65	78.6	78.6
4.0" x 1.0"	101.6 / 97.38 x 2.11	25.4 / 22.1 x 1.65	103.2	79.4
4.0" x 1.5"	101.6 / 97.38 x 2.11	38.1 / 34.8 x 1.65	103.2	86.5
4.0" x 2.0"	101.6 / 97.38 x 2.11	50.8 / 47.5 x 1.65	103.2	91.3
4.0" x 2.5"	101.6 / 97.38 x 2.11	63.5 / 60.2 x 1.65	103.2	91.3
4.0" x 3.0"	101.6 / 97.38 x 2.11	76.2 / 72.9 x 1.65	103.2	91.3
6.0" x 2.0"	152.4 / 146.86 x 2.77	50.8 / 47.5 x 1.65	149.2	133.4
6.0" x 3.0"	152.4 / 146.86 x 2.77	76.2 / 72.9 x 1.65	149.2	133.4
6.0" x 4.0"	152.4 / 146.86 x 2.77	101.6 / 97.38 x 2.11	149.2	139.7

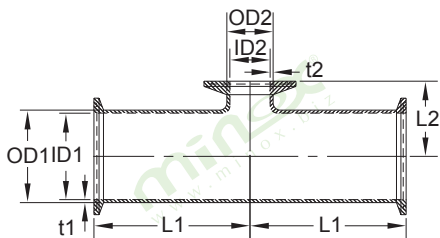




**[A3401] Instrument Reducing Tee with Weld End  
Dimension (mm)**

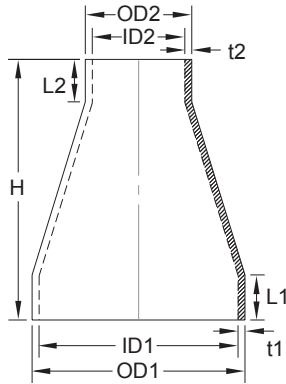
Size (Inch)	OD1 / ID1 x t1	OD2 / ID2 x t2	L1	L2
1.5" x 1.0"	38.1 / 34.80 x 1.65	25.4 / 22.1 x 1.65	42.1	22
2.0" x 1.5"	50.8 / 47.5 x 1.65	38.1 / 34.8 x 1.65	52.4	29
2.5" x 2.0"	63.5 / 60.2 x 1.65	50.8 / 47.5 x 1.65	59.5	35
3.0" x 2.0"	76.2 / 72.9 x 1.65	50.8 / 47.5 x 1.65	65.9	41
3.0" x 2.5"	76.2 / 72.9 x 1.65	63.5 / 60.2 x 1.65	65.9	41
4.0" x 2.0"	101.6 / 97.38 x 2.11	50.8 / 47.5 x 1.65	117.5	54
4.0" x 2.5"	101.6 / 97.38 x 2.11	63.5 / 60.2 x 1.65	117.5	54
4.0" x 3.0"	101.6 / 97.38 x 2.11	76.2 / 72.9 x 1.65	117.5	54

**[A3402] Instrument Reducing Tee with  
Clamp End  
Dimension (mm)**



Size (Inch)	OD1 / ID1 x t1	OD2 / ID2 x t2	L1	L2
0.75" x 0.5"	19.05 / 15.75 x 1.65	12.7 / 9.4 x 1.65	41.3	25.4
1.0" x 0.5"	25.4 / 22.1 x 1.65	12.7 / 9.4 x 1.65	41.3	28.6
1.0" x 0.75"	25.4 / 22.1 x 1.65	19.05 / 15.75 x 1.65	41.3	28.6
1.5" x 0.5"	38.1 / 34.8 x 1.65	12.7 / 9.4 x 1.65	54.8	34.9
1.5" x 0.75"	38.1 / 34.8 x 1.65	19.05 / 15.75 x 1.65	54.8	34.9
1.5" x 1.0"	38.1 / 34.8 x 1.65	25.4 / 22.1 x 1.65	54.8	34.9
2.0" x 1.0"	50.8 / 47.5 x 1.65	25.4 / 22.1 x 1.65	65.1	41.3
2.0" x 1.5"	50.8 / 47.5 x 1.65	38.1 / 34.8 x 1.65	65.1	41.3
2.5" x 1.0"	63.5 / 60.2 x 1.65	25.4 / 22.1 x 1.65	72.2	47.6
2.5" x 1.5"	63.5 / 60.2 x 1.65	38.1 / 34.8 x 1.65	72.2	47.6
2.5" x 2.0"	63.5 / 60.2 x 1.65	50.8 / 47.5 x 1.65	72.2	47.6
3.0" x 1.0"	76.2 / 72.9 x 1.65	25.4 / 22.1 x 1.65	78.6	54.0
3.0" x 1.5"	76.2 / 72.9 x 1.65	38.1 / 34.8 x 1.65	78.6	54.0
3.0" x 2.0"	76.2 / 72.9 x 1.65	50.8 / 47.5 x 1.65	78.6	54.0
3.0" x 2.5"	76.2 / 72.9 x 1.65	63.5 / 60.2 x 1.65	78.6	54.0
4.0" x 1.0"	101.6 / 97.38 x 2.11	25.4 / 22.1 x 1.65	103.2	66.7
4.0" x 1.5"	101.6 / 97.38 x 2.11	38.1 / 34.8 x 1.65	103.2	66.7
4.0" x 2.0"	101.6 / 97.38 x 2.11	50.8 / 47.5 x 1.65	103.2	66.7
4.0" x 2.5"	101.6 / 97.38 x 2.11	63.5 / 60.2 x 1.65	103.2	66.7
4.0" x 3.0"	101.6 / 97.38 x 2.11	76.2 / 72.9 x 1.65	103.2	66.7

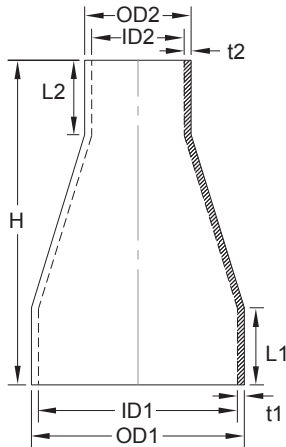




**[A3001-60] Concentric Reducer with Tangent Dimension (mm)**

Size (Inch)	OD1 / ID1 x t1	OD2 / ID2 x t2	H	L1	L2
0.75" x 0.5"	19.05 / 15.75 x 1.65	12.7 / 9.4 x 1.65	25.4	9.5	9.5
1.0" x 0.5"	25.40 / 22.1 x 1.65	12.7 / 9.4 x 1.65	60.3	9.5	9.5
1.0" x 0.75"	25.40 / 22.1 x 1.65	19.05 / 15.75 x 1.65	60.3	9.5	9.5
1.5" x 0.5"	38.1 / 34.8 x 1.65	12.7 / 9.4 x 1.65	69.9	9.5	9.5
1.5" x 0.75"	38.1 / 34.8 x 1.65	19.05 / 15.75 x 1.65	60.3	9.5	9.5
1.5" x 1.0"	38.1 / 34.8 x 1.65	25.4 / 22.1 x 1.65	60.3	9.5	9.5
2.0" x 0.5"	50.8 / 47.5 x 1.65	12.7 / 9.4 x 1.65	111.1	9.5	9.5
2.0" x 0.75"	50.8 / 47.5 x 1.65	19.05 / 15.75 x 1.65	101.6	9.5	9.5
2.0" x 1.0"	50.8 / 47.5 x 1.65	25.4 / 22.1 x 1.65	60.3	9.5	9.5
2.0" x 1.5"	50.8 / 47.5 x 1.65	38.1 / 34.8 x 1.65	60.3	9.5	9.5
2.5" x 1.0"	63.5 / 60.2 x 1.65	25.4 / 22.1 x 1.65	101.6	9.5	9.5
2.5" x 1.5"	63.5 / 60.2 x 1.65	38.1 / 34.8 x 1.65	60.3	9.5	9.5
2.5" x 2.0"	63.5 / 60.2 x 1.65	50.8 / 47.5 x 1.65	60.3	9.5	9.5
3.0" x 1.0"	76.2 / 72.9 x 1.65	25.4 / 22.1 x 1.65	133.4	9.5	9.5
3.0" x 1.5"	76.2 / 72.9 x 1.65	38.1 / 34.8 x 1.65	92.0	9.5	9.5
3.0" x 2.0"	76.2 / 72.9 x 1.65	50.8 / 47.5 x 1.65	92.0	9.5	9.5
3.0" x 2.5"	76.2 / 72.9 x 1.65	63.5 / 60.2 x 1.65	92.0	9.5	9.5
4.0" x 1.5"	101.6 / 97.38 x 2.11	38.1 / 34.8 x 1.65	92.0	9.5	9.5
4.0" x 2.0"	101.6 / 97.38 x 2.11	50.8 / 47.5 x 1.65	92.0	9.5	9.5
4.0" x 2.5"	101.6 / 97.38 x 2.11	63.5 / 60.2 x 1.65	92.0	9.5	9.5
4.0" x 3.0"	101.6 / 97.38 x 2.11	76.2 / 72.9 x 1.65	92.0	9.5	9.5
6.0" x 3.0"	152.4 / 146.86 x 2.77	76.2 / 72.9 x 1.65	228.6	9.5	9.5
6.0" x 4.0"	152.4 / 146.86 x 2.77	101.6 / 97.38 x 2.11	228.6	9.5	9.5

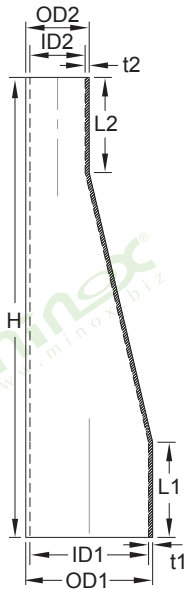




**[A30901-60] Concentric Reducer with Automatic Tube Weld End  
Dimension (mm)**

Size (Inch)	OD1 / ID1 x t1	OD2 / ID2 x t2	H	L1	L2
0.75" x 0.5"	19.05 / 15.75 x 1.65	12.7 / 9.4 x 1.65	101.6	38.10	38.10
1.0" x 0.5"	25.40 / 22.1 x 1.65	12.7 / 9.4 x 1.65	114.3	38.10	38.10
1.0" x 0.75"	25.40 / 22.1 x 1.65	19.05 / 15.75 x 1.65	101.6	38.10	38.10
1.5" x 0.5"	38.1 / 34.8 x 1.65	12.7 / 9.4 x 1.65	139.7	38.10	38.10
1.5" x 0.75"	38.1 / 34.8 x 1.65	19.05 / 15.75 x 1.65	127.0	38.10	38.10
1.5" x 1.0"	38.1 / 34.8 x 1.65	25.4 / 22.1 x 1.65	127.0	38.10	38.10
2.0" x 0.5"	50.8 / 47.5 x 1.65	12.7 / 9.4 x 1.65	196.9	38.10	38.10
2.0" x 0.75"	50.8 / 47.5 x 1.65	19.05 / 15.75 x 1.65	184.2	38.10	38.10
2.0" x 1.0"	50.8 / 47.5 x 1.65	25.4 / 22.1 x 1.65	184.2	38.10	38.10
2.0" x 1.5"	50.8 / 47.5 x 1.65	38.1 / 34.8 x 1.65	133.4	38.10	38.10
2.5" x 1.5"	63.5 / 60.2 x 1.65	38.1 / 34.8 x 1.65	184.2	38.10	38.10
2.5" x 2.0"	63.5 / 60.2 x 1.65	50.8 / 47.5 x 1.65	139.7	38.10	38.10
3.0" x 1.5"	76.2 / 72.9 x 1.65	38.1 / 34.8 x 1.65	235.0	44.45	38.10
3.0" x 2.0"	76.2 / 72.9 x 1.65	50.8 / 47.5 x 1.65	190.5	44.45	38.10
3.0" x 2.5"	76.2 / 72.9 x 1.65	63.5 / 60.2 x 1.65	139.7	44.45	38.10
4.0" x 1.5"	101.6 / 97.38 x 2.11	38.1 / 34.8 x 1.65	342.9	50.80	38.10
4.0" x 2.0"	101.6 / 97.38 x 2.11	50.8 / 47.5 x 1.65	298.5	50.80	38.10
4.0" x 2.5"	101.6 / 97.38 x 2.11	63.5 / 60.2 x 1.65	247.7	50.80	38.10
4.0" x 3.0"	101.6 / 97.38 x 2.11	76.2 / 72.9 x 1.65	196.9	50.80	44.45
6.0" x 3.0"	152.4 / 146.86 x 2.77	76.2 / 72.9 x 1.65	254.0	63.50	44.45
6.0" x 4.0"	152.4 / 146.86 x 2.77	101.6 / 97.38 x 2.11	254.0	63.50	50.80

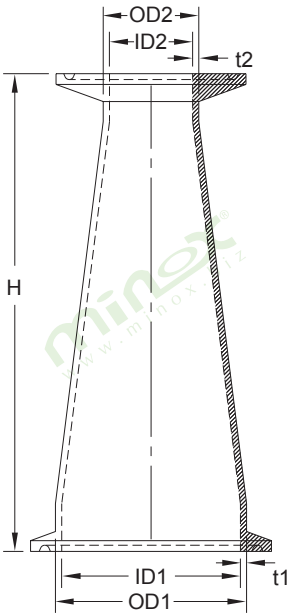




**[A3101-60] Eccentric Reducer with Automatic Tube Weld End Dimension (mm)**

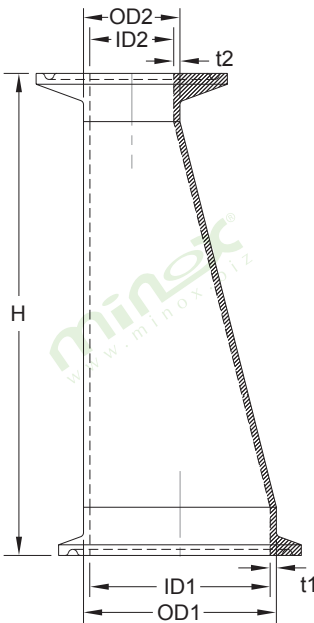
Size (Inch)	OD1 / ID1 x t1	OD2 / ID2 x t2	H	L1	L2
0.75" x 0.5"	19.05 / 15.75 x 1.65	12.7 / 9.4 x 1.65	101.6	38.10	38.10
1.0" x 0.5"	25.40 / 22.1 x 1.65	12.7 / 9.4 x 1.65	114.3	38.10	38.10
1.0" x 0.75"	25.40 / 22.1 x 1.65	19.05 / 15.75 x 1.65	101.6	38.10	38.10
1.5" x 0.5"	38.1 / 34.8 x 1.65	12.7 / 9.4 x 1.65	139.7	38.10	38.10
1.5" x 0.75"	38.1 / 34.8 x 1.65	19.05 / 15.75 x 1.65	127.0	38.10	38.10
1.5" x 1.0"	38.1 / 34.8 x 1.65	25.4 / 22.1 x 1.65	127.0	38.10	38.10
2.0" x 0.5"	50.8 / 47.5 x 1.65	12.7 / 9.4 x 1.65	196.9	38.10	38.10
2.0" x 0.75"	50.8 / 47.5 x 1.65	19.05 / 15.75 x 1.65	184.2	38.10	38.10
2.0" x 1.0"	50.8 / 47.5 x 1.65	25.4 / 22.1 x 1.65	184.2	38.10	38.10
2.0" x 1.5"	50.8 / 47.5 x 1.65	38.1 / 34.8 x 1.65	133.4	38.10	38.10
2.5" x 1.5"	63.5 / 60.2 x 1.65	38.1 / 34.8 x 1.65	184.2	38.10	38.10
2.5" x 2.0"	63.5 / 60.2 x 1.65	50.8 / 47.5 x 1.65	139.7	38.10	38.10
3.0" x 1.5"	76.2 / 72.9 x 1.65	38.1 / 34.8 x 1.65	235.0	44.45	38.10
3.0" x 2.0"	76.2 / 72.9 x 1.65	50.8 / 47.5 x 1.65	190.5	44.45	38.10
3.0" x 2.5"	76.2 / 72.9 x 1.65	63.5 / 60.2 x 1.65	139.7	44.45	38.10
4.0" x 1.5"	101.6 / 97.38 x 2.11	38.1 / 34.8 x 1.65	342.9	50.80	38.10
4.0" x 2.0"	101.6 / 97.38 x 2.11	50.8 / 47.5 x 1.65	298.5	50.80	38.10
4.0" x 2.5"	101.6 / 97.38 x 2.11	63.5 / 60.2 x 1.65	247.7	50.80	38.10
4.0" x 3.0"	101.6 / 97.38 x 2.11	76.2 / 72.9 x 1.65	196.9	50.80	44.45
6.0" x 3.0"	152.4 / 146.86 x 2.77	76.2 / 72.9 x 1.65	247.7	63.50	44.45
6.0" x 4.0"	152.4 / 146.86 x 2.77	101.6 / 97.38 x 2.11	254.0	63.50	50.80





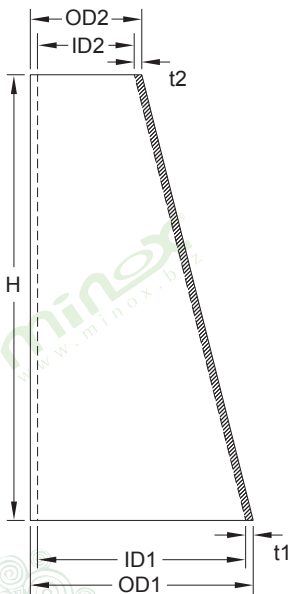
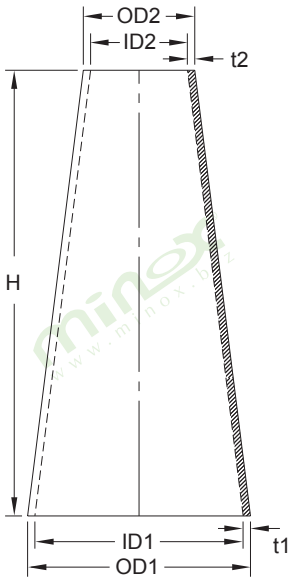
**[A3002-61] Concentric Reducer Clamp End  
Dimension (mm)**

Size (Inch)	OD1 / ID1 x t1	OD2 / ID2 x t2	H
0.75" x 0.5"	19.05 / 15.75 x 1.65	12.7 / 9.4 x 1.65	50.8
1.0" x 0.5"	25.40 / 22.1 x 1.65	12.7 / 9.4 x 1.65	76.2
1.0" x 0.75"	25.40 / 22.1 x 1.65	19.05 / 15.75 x 1.65	50.8
1.5" x 0.5"	38.1 / 34.8 x 1.65	12.7 / 9.4 x 1.65	88.9
1.5" x 0.75"	38.1 / 34.8 x 1.65	19.05 / 15.75 x 1.65	76.2
1.5" x 1.0"	38.1 / 34.8 x 1.65	25.4 / 22.1 x 1.65	76.2
2.0" x 0.5"	50.8 / 47.5 x 1.65	12.7 / 9.4 x 1.65	177.8
2.0" x 0.75"	50.8 / 47.5 x 1.65	19.05 / 15.75 x 1.65	152.4
2.0" x 1.0"	50.8 / 47.5 x 1.65	25.4 / 22.1 x 1.65	127.0
2.0" x 1.5"	50.8 / 47.5 x 1.65	38.1 / 34.8 x 1.65	76.2
2.5" x 1.0"	63.5 / 60.2 x 1.65	25.4 / 22.1 x 1.65	117.8
2.5" x 1.5"	63.5 / 60.2 x 1.65	38.1 / 34.8 x 1.65	127.0
2.5" x 2.0"	63.5 / 60.2 x 1.65	50.8 / 47.5 x 1.65	76.2
3.0" x 1.0"	76.2 / 72.9 x 1.65	25.4 / 22.1 x 1.65	228.6
3.0" x 1.5"	76.2 / 72.9 x 1.65	38.1 / 34.8 x 1.65	177.8
3.0" x 2.0"	76.2 / 72.9 x 1.65	50.8 / 47.5 x 1.65	127.0
3.0" x 2.5"	76.2 / 72.9 x 1.65	63.5 / 60.2 x 1.65	76.2
4.0" x 1.0"	101.6 / 97.38 x 2.11	25.4 / 22.1 x 1.65	333.4
4.0" x 1.5"	101.6 / 97.38 x 2.11	38.1 / 34.8 x 1.65	282.6
4.0" x 2.0"	101.6 / 97.38 x 2.11	50.8 / 47.5 x 1.65	231.8
4.0" x 2.5"	101.6 / 97.38 x 2.11	63.5 / 60.2 x 1.65	181.0
4.0" x 3.0"	101.6 / 97.38 x 2.11	76.2 / 72.9 x 1.65	130.2
6.0" x 2.0"	152.4 / 146.86 x 2.77	50.8 / 47.5 x 1.65	174.6
6.0" x 3.0"	152.4 / 146.86 x 2.77	76.2 / 72.9 x 1.65	174.6
6.0" x 4.0"	152.4 / 146.86 x 2.77	101.6 / 97.38 x 2.11	177.8



**[A3102-61] Eccentric Reducer Clamp End  
Dimension (mm)**

Size (Inch)	OD1 / ID1 x t1	OD2 / ID2 x t2	H
0.75" x 0.5"	19.05 / 15.75 x 1.65	12.7 / 9.4 x 1.65	50.8
1.0" x 0.5"	25.40 / 22.1 x 1.65	12.7 / 9.4 x 1.65	76.2
1.0" x 0.75"	25.40 / 22.1 x 1.65	19.05 / 15.75 x 1.65	50.8
1.5" x 0.5"	38.1 / 34.8 x 1.65	12.7 / 9.4 x 1.65	88.9
1.5" x 0.75"	38.1 / 34.8 x 1.65	19.05 / 15.75 x 1.65	76.2
1.5" x 1.0"	38.1 / 34.8 x 1.65	25.4 / 22.1 x 1.65	76.2
2.0" x 0.5"	50.8 / 47.5 x 1.65	12.7 / 9.4 x 1.65	177.8
2.0" x 0.75"	50.8 / 47.5 x 1.65	19.05 / 15.75 x 1.65	152.4
2.0" x 1.0"	50.8 / 47.5 x 1.65	25.4 / 22.1 x 1.65	127.0
2.0" x 1.5"	50.8 / 47.5 x 1.65	38.1 / 34.8 x 1.65	76.2
2.5" x 1.0"	63.5 / 60.2 x 1.65	25.4 / 22.1 x 1.65	117.8
2.5" x 1.5"	63.5 / 60.2 x 1.65	38.1 / 34.8 x 1.65	127.0
2.5" x 2.0"	63.5 / 60.2 x 1.65	50.8 / 47.5 x 1.65	76.2
3.0" x 1.0"	76.2 / 72.9 x 1.65	25.4 / 22.1 x 1.65	228.6
3.0" x 1.5"	76.2 / 72.9 x 1.65	38.1 / 34.8 x 1.65	177.8
3.0" x 2.0"	76.2 / 72.9 x 1.65	50.8 / 47.5 x 1.65	127.0
3.0" x 2.5"	76.2 / 72.9 x 1.65	63.5 / 60.2 x 1.65	76.2
4.0" x 1.0"	101.6 / 97.38 x 2.11	25.4 / 22.1 x 1.65	333.4
4.0" x 1.5"	101.6 / 97.38 x 2.11	38.1 / 34.8 x 1.65	282.6
4.0" x 2.0"	101.6 / 97.38 x 2.11	50.8 / 47.5 x 1.65	231.8
4.0" x 2.5"	101.6 / 97.38 x 2.11	63.5 / 60.2 x 1.65	181.0
4.0" x 3.0"	101.6 / 97.38 x 2.11	76.2 / 72.9 x 1.65	130.2
6.0" x 2.0"	152.4 / 146.86 x 2.77	50.8 / 47.5 x 1.65	174.6
6.0" x 3.0"	152.4 / 146.86 x 2.77	76.2 / 72.9 x 1.65	174.6
6.0" x 4.0"	152.4 / 146.86 x 2.77	101.6 / 97.38 x 2.11	177.8



**[A3001-61] Concentric Reducer without Tangent**  
**[A3101-61] Eccentric Reducer without Tangent**  
**Dimension (mm)**

Size (Inch)	OD1 / ID1 x t1	OD2 / ID2 x t2	H
0.75" x 0.5"	19.05 / 15.75 x 1.65	12.7 / 9.4 x 1.65	25.4
1.0" x 0.5"	25.40 / 22.1 x 1.65	12.7 / 9.4 x 1.65	50.8
1.0" x 0.75"	25.40 / 22.1 x 1.65	19.05 / 15.75 x 1.65	25.4
1.5" x 0.5"	38.1 / 34.8 x 1.65	12.7 / 9.4 x 1.65	63.5
1.5" x 0.75"	38.1 / 34.8 x 1.65	19.05 / 15.75 x 1.65	50.8
1.5" x 1.0"	38.1 / 34.8 x 1.65	25.4 / 22.1 x 1.65	50.8
2.0" x 0.5"	50.8 / 47.5 x 1.65	12.7 / 9.4 x 1.65	152.4
2.0" x 0.75"	50.8 / 47.5 x 1.65	19.05 / 15.75 x 1.65	127.0
2.0" x 1.0"	50.8 / 47.5 x 1.65	25.4 / 22.1 x 1.65	101.6
2.0" x 1.5"	50.8 / 47.5 x 1.65	38.1 / 34.8 x 1.65	50.8
2.5" x 1.0"	63.5 / 60.2 x 1.65	25.4 / 22.1 x 1.65	152.4
2.5" x 1.5"	63.5 / 60.2 x 1.65	38.1 / 34.8 x 1.65	101.6
2.5" x 2.0"	63.5 / 60.2 x 1.65	50.8 / 47.5 x 1.65	50.8
3.0" x 1.0"	76.2 / 72.9 x 1.65	25.4 / 22.1 x 1.65	203.2
3.0" x 1.5"	76.2 / 72.9 x 1.65	38.1 / 34.8 x 1.65	152.4
3.0" x 2.0"	76.2 / 72.9 x 1.65	50.8 / 47.5 x 1.65	101.6
3.0" x 2.5"	76.2 / 72.9 x 1.65	63.5 / 60.2 x 1.65	50.8
4.0" x 1.0"	101.6 / 97.38 x 2.11	25.4 / 22.1 x 1.65	304.8
4.0" x 1.5"	101.6 / 97.38 x 2.11	38.1 / 34.8 x 1.65	254.0
4.0" x 2.0"	101.6 / 97.38 x 2.11	50.8 / 47.5 x 1.65	203.2
4.0" x 2.5"	101.6 / 97.38 x 2.11	63.5 / 60.2 x 1.65	152.4
4.0" x 3.0"	101.6 / 97.38 x 2.11	76.2 / 72.9 x 1.65	101.6
6.0" x 2.0"	152.4 / 146.86 x 2.77	50.8 / 47.5 x 1.65	139.7
6.0" x 3.0"	152.4 / 146.86 x 2.77	76.2 / 72.9 x 1.65	139.7
6.0" x 4.0"	152.4 / 146.86 x 2.77	101.6 / 97.38 x 2.11	139.7

