

minox®



MINOX® CS10 Control Head

“ Reliable Control, Maximum Efficiency ”





The **MINOX® CS10 Control Head** features intuitive interfaces and easy-to-use controls, making operation and monitoring straightforward. With minimal training required, your team can quickly adapt to the system and optimize valve performance with ease.

We prioritize cost-effectiveness in our solutions, offering robust and reliable control options at competitive prices. Our streamlined designs reduce complexity and maintenance requirements, resulting in lower operational costs over the lifespan of the system.

Whether you are in the food and beverage, chemical processing, pharmaceutical industries, or beyond, **MINOX® CS10 Control Head** is the ultimate solution to streamline your operations, maximize efficiency and minimize costs.

Contact us today to learn more and experience the future of control head technology!

Introduction



Butterfly valve with A63 stainless steel actuator for 1" to 2.5"

Butterfly valve with D85 stainless steel actuator for 1" to 4"





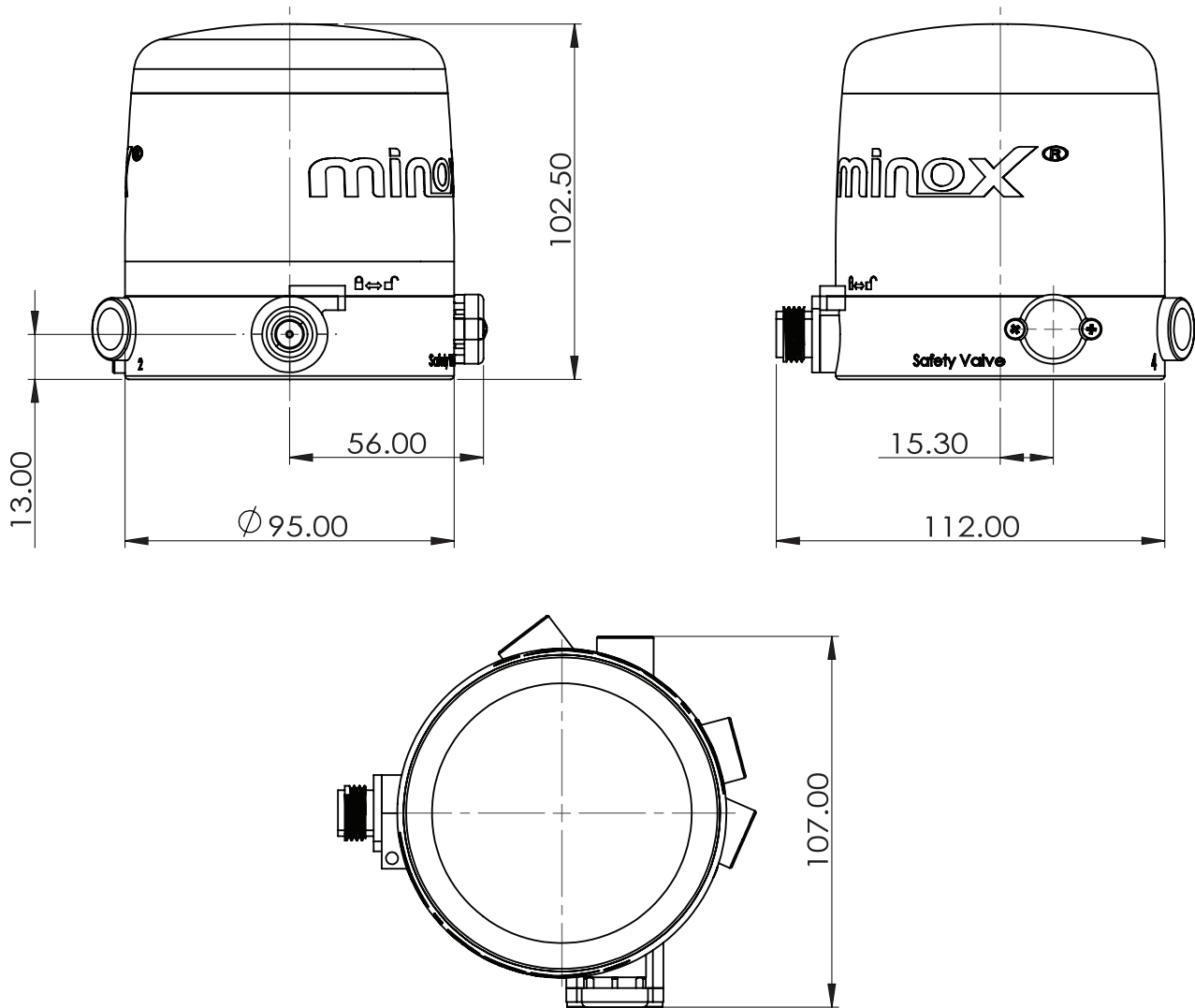
Seat valve with stainless steel actuator for 1" to 4"
(valve body combination: M21, M22, M31, M32, M20, M30)

The **MINOX® CS10 Control Head** is designed for use with pneumatically operated MINOX® sanitary butterfly valves and seat valves. This control head provides direct interface between the PLC control system and the sanitary valves, enabling seamless communication and integration into automated systems. Key features include:

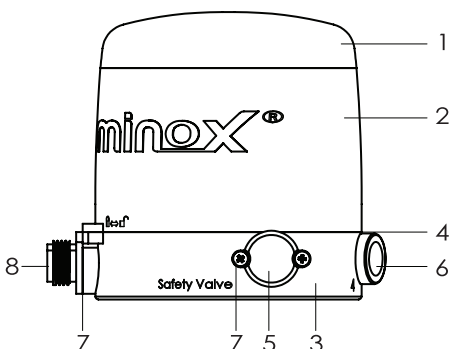
- Digital interface with 24 V DC or AS-Interface communication for connection to a PLC system
- Automatic air supply via solenoid valve
- High precision position sensors with easy adjustment
- Valve status display via LED, visible from any direction
- In-line air filter provided to protect solenoid valve

Technical Data

Material	
Cover Body Basic housing Seal	PC PC Nylon NBR
Installation Environment	
Working temperature Protection class (IP)	- 10 to + 50°C IP65 acc. to EN 60529
Control Board	
Communication Position sensor Stroke range valve spindle	Digital interface AS-Interface v3.0 Contactless magnetic sensor (PNP) (NPN on request) 8mm - 60mm
Solenoid Valve	
Supply voltage Nominal power Air supply Type of solenoids Number of solenoids Manual hold override	24 V DC \pm 10 % 0.35 W 150 – 700 kPa 3/2-way or 5/2-way 1 Yes
Electrical Connection	
Multipole (Digital & AS-I) Cable gland (Digital)	M12, 5-pins M16 \times 1.5 (Terminal range 4 - 8 mm); With screw terminals for cable cross-sections 1.0 - 2.5 mm ²
Pneumatic Data	
Air quality Supply pressure to actuator In-line air filter Filtration Pilot air ports	Class 3,3,3 acc. to DIN ISO 8573-1 6 - 8 bar Exchangeable 10 μ m Threaded ports G 1/8, stainless steel
LED Indication	
Valve ENERGISED Valve DE-ENERGISED	 Green color  Blue color



Material



No.	Element	Material
1	Cover	PC
2	Body	PC
3	Basic housing	Nylon
4	Seal	NBR
5	Safety valve	Nylon
6	Push-in connector	Stainless steel
7	Screw	Stainless steel
8	Plug connector M12	Stainless steel

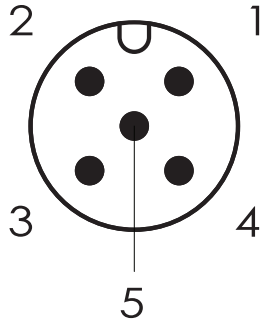
Digital Interface, 24V DC

Voltage supply
Current consumption
Terminal type

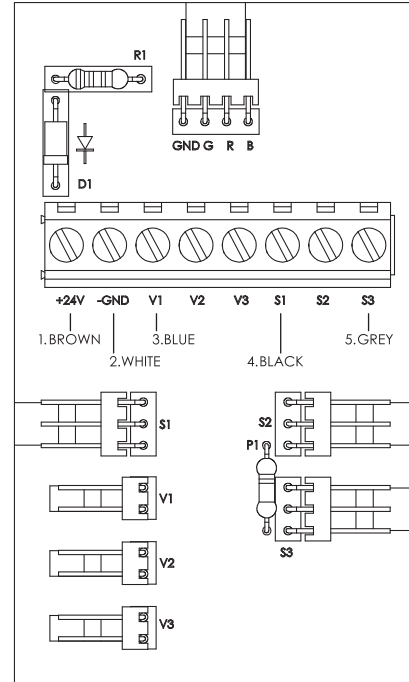
24 V DC \pm 10%
Max. 100 mA (solenoid valve, sensor and LED light active)
Screw terminal for cable cross-sections 1.0 - 2.5 mm²

Electrical Connections

Plug M12, 5 Pin



Cable Gland Circular



Pin	Control Board	Colour Code Wires	LED Indication
1	Power supply +24V	Brown	-
2	Power supply -GND	White	-
3	In V1: Main valve	Blue	-
4	Out S1: Valve EN	Black	Green
5	Out S3: Valve DE-EN	Grey	Blue

AS-Interface

Voltage supply
Protection class
Surge protection
Current consumption
AS-I specification v3.0

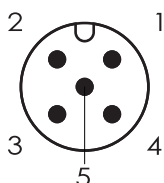
AS-Interface 26.5 – 31.6 V DC
III
U_e: overvoltage category II, safe isolated power supplies (PELV)
Max. 100 mA (solenoid valve, sensor and LED light active)

- Supports extended A/B addressing and allows up to 62 nodes on an AS-I network
- Slave profile = 7A77
- Default slave address (node) is 0
- Address (node) changes with a standard handheld AS-I addressing device or via AS-I Master Gateway

AS-I addressing

Electrical Connections

Plug M12, 5 Pin

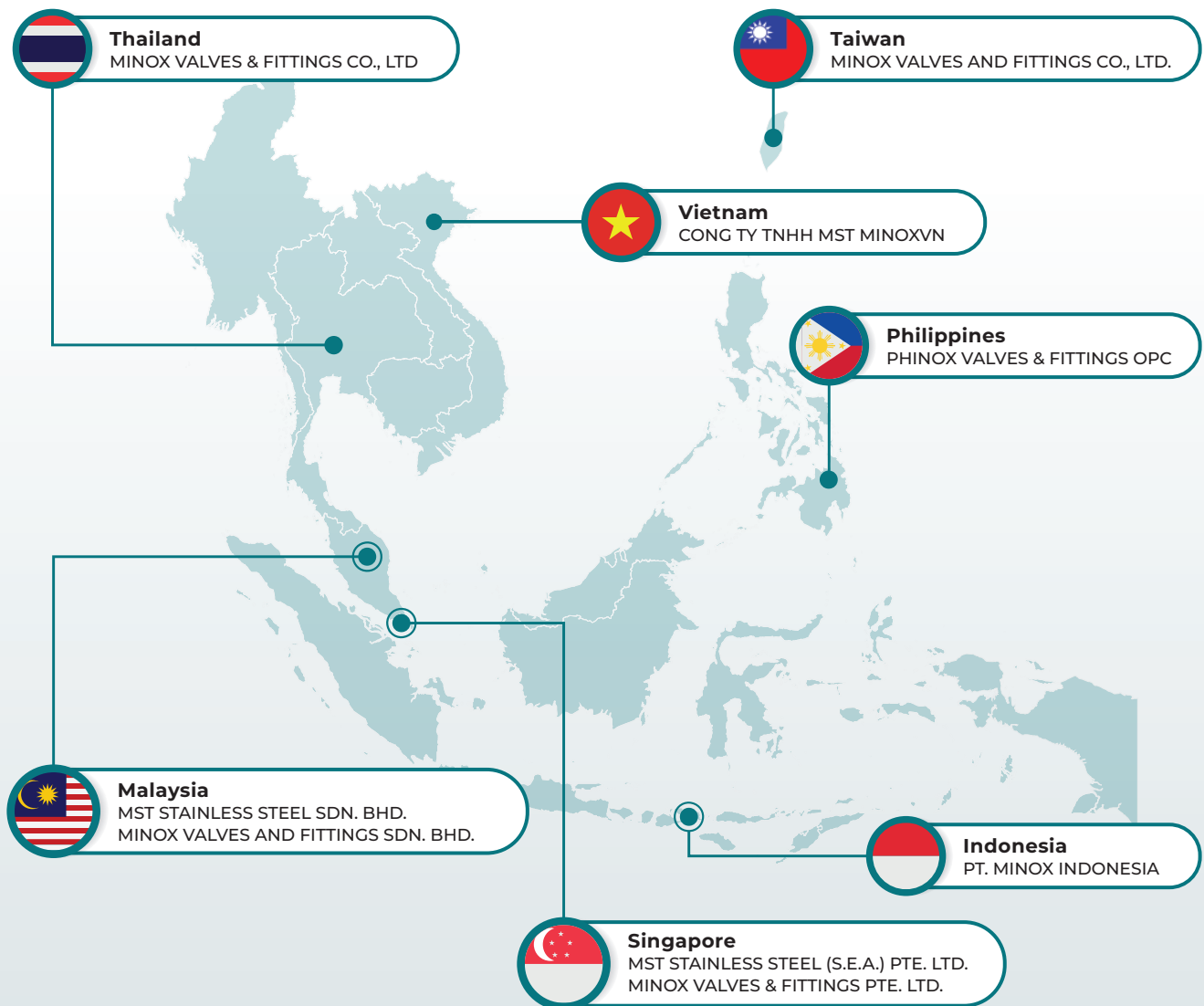


Pin	Control Board	Colour Code Wires
1	AS-I +	Brown
2	nc	-
3	AS-I -	Blue
4	nc	-
5	nc	-

About minox®

At Minox, we ensure that every product bearing the MINOX® label meets high-quality standards across food, beverage, pharmaceutical and semiconductor processing.

To better serve our global customers, we establish 6 regional offices and 12 warehouses in Malaysia, Singapore, Indonesia, Thailand, along with representative agents in Vietnam, Philippines, Taiwan.



Minox Valves and Fittings Sdn Bhd
(A Wholly-Owned Subsidiary of Minox International Group Berhad)

+603 8063 7450 / +603 8063 7470

info_mas@minox.biz

No.3, Jalan Industri PBP 11,
Taman Industri Pusat Bandar Puchong,
47100 Puchong, Selangor, Malaysia.



Visit **Minox.biz** to explore our products and download product specifications and catalogue